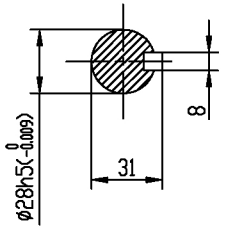
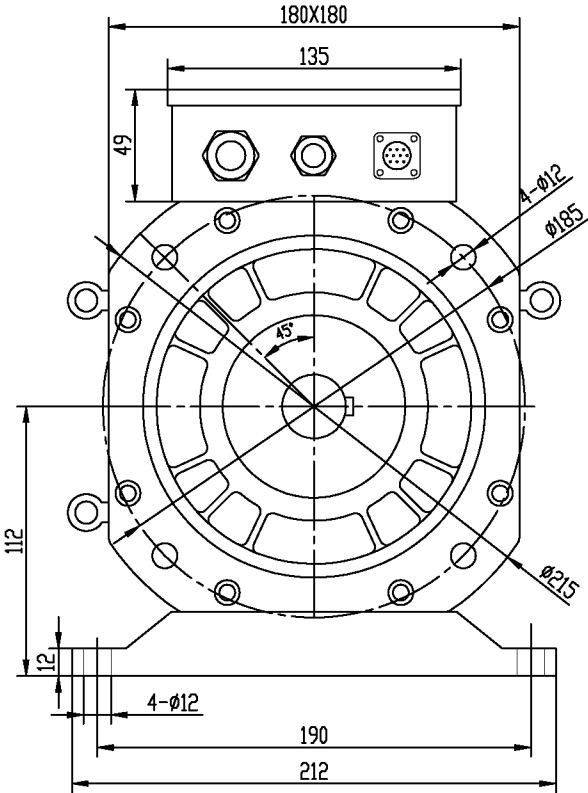
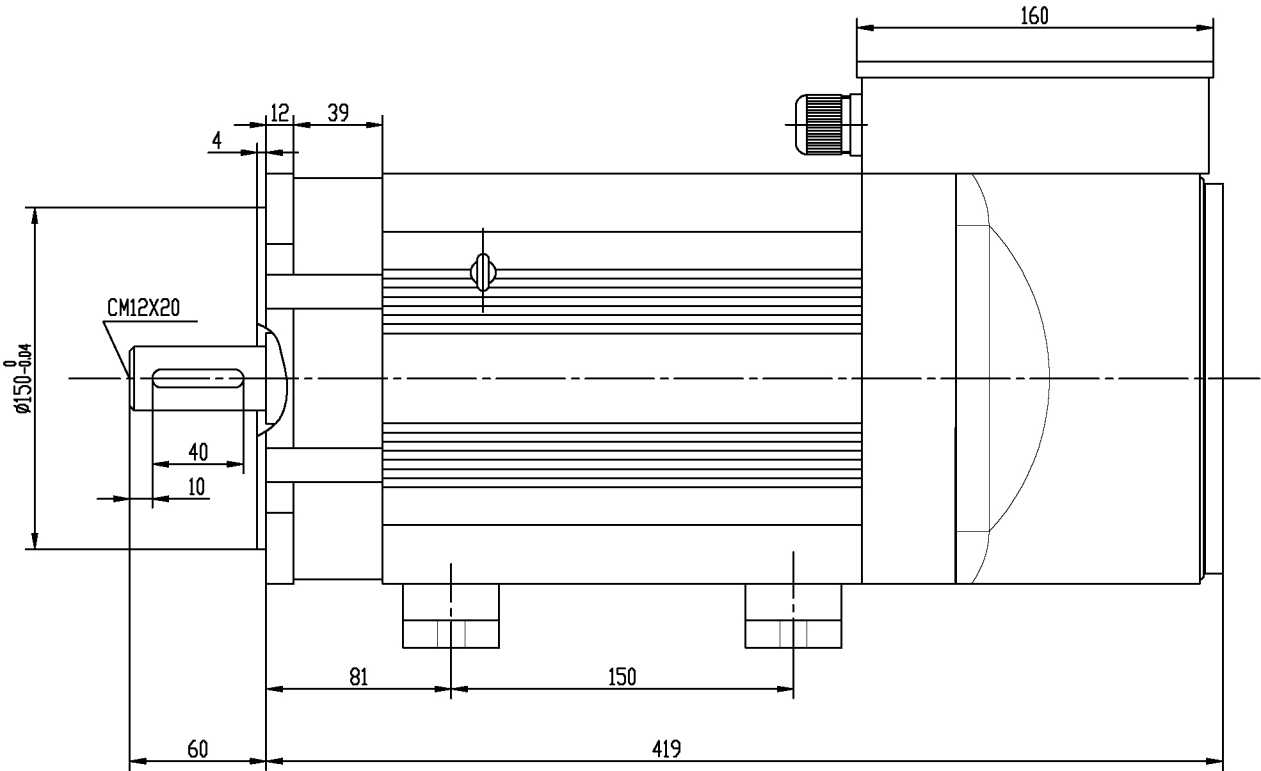
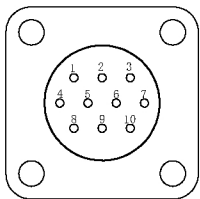
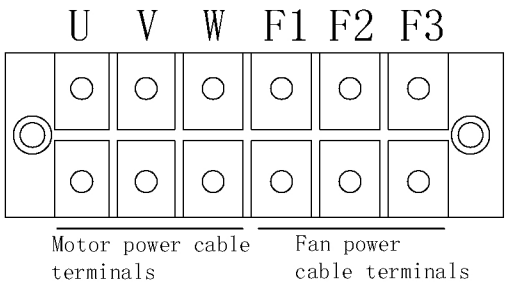


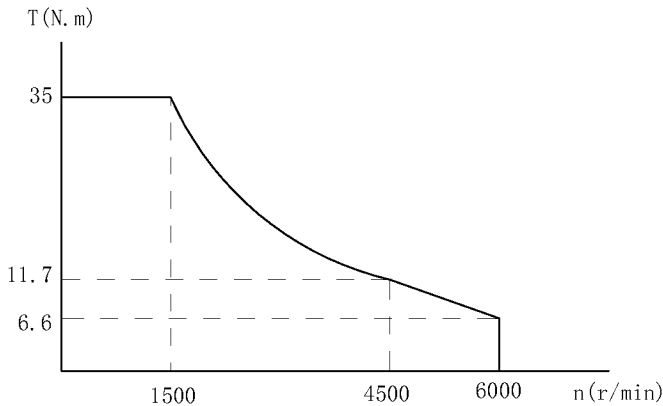
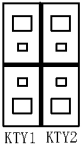
V1.0



Motor specifications														
Power KW		Speed rpm		Frequency Hz	Voltage V	Current A		Torque N.m		Inertia Kg. m²	No. of motor poles	Torque factor Nm/A	Encoder type	Fan power W
Operational rating	30 minutes overload	Operational rating	Max mechanical speed			Operational rating	30 minutes overload	Operational rating	30 minutes overload					
5.5	7.5	1500	6000	100	380	11.9	15.4	35	48	0.0151	4	2.94	5V - Incremental 2500 lines	30

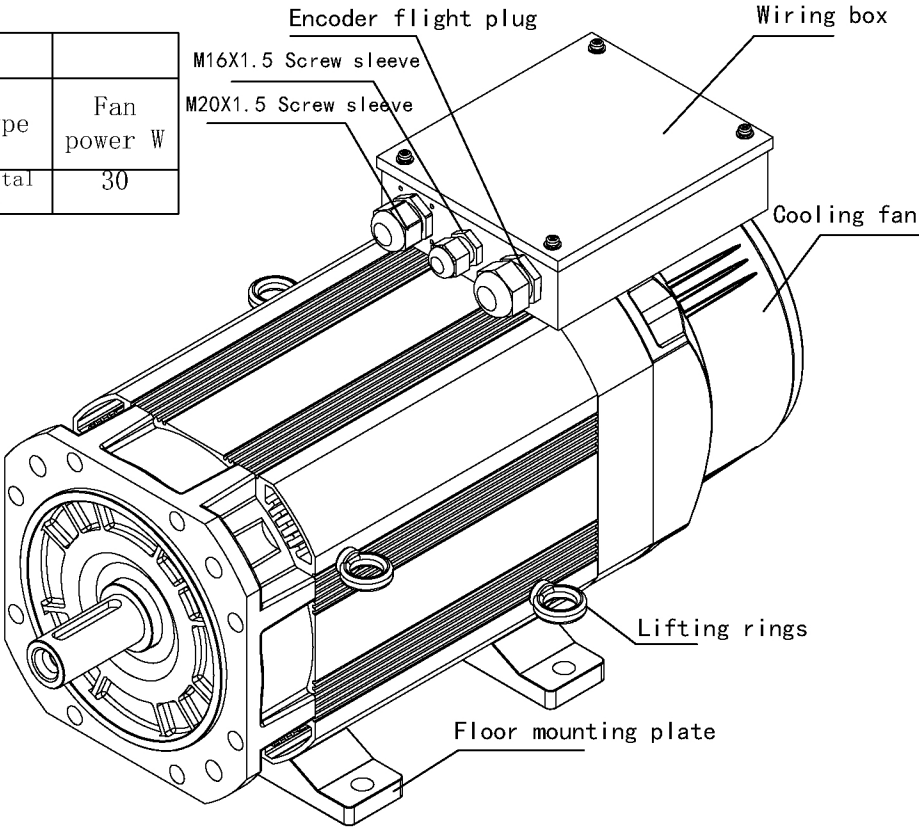


Encoder wiring definition	
1	VCC
2	GND
3	A+
4	A-
5	B+
6	B-
7	Z+
8	Z-
9	
10	Shield



Technical requirements:

- 1.The motor supports both horizontal and vertical mounting methods, with removable foot mounting plates for horizontal mounting;
- 2.The cooling fan of this motor has a 380V input voltage, and the fan power is 30W;
- 3.The recommended core size for this motor power cable is 2.5 mm² and the recommended power cable terminal is TB-2506.;
- 4.The above wiring definition markings are for illustrative purposes only, see the internal wire markings of the motor wiring box for details;
- 5.The motor stator coil is embedded with KTY84 temperature measuring resistor, please pay attention to the motor temperature when using the motor to prevent damage to the motor due to high temperature.;



Suzhou Veichi Electric Co.,Ltd	View:	
Material: Spindle motor	Designer:	Pan Yijia
Material Code:	Date:	23.05.05
Specification: CM1L-1560D5R5-U228K7Y	Ver:	A0