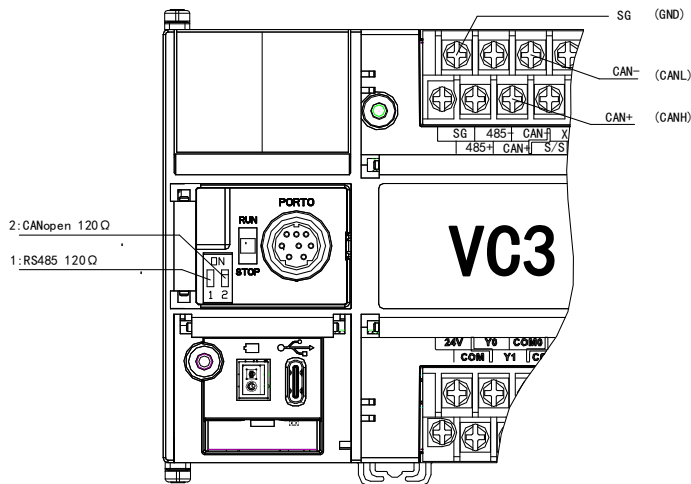


SD700 and VC3 CAN communication case

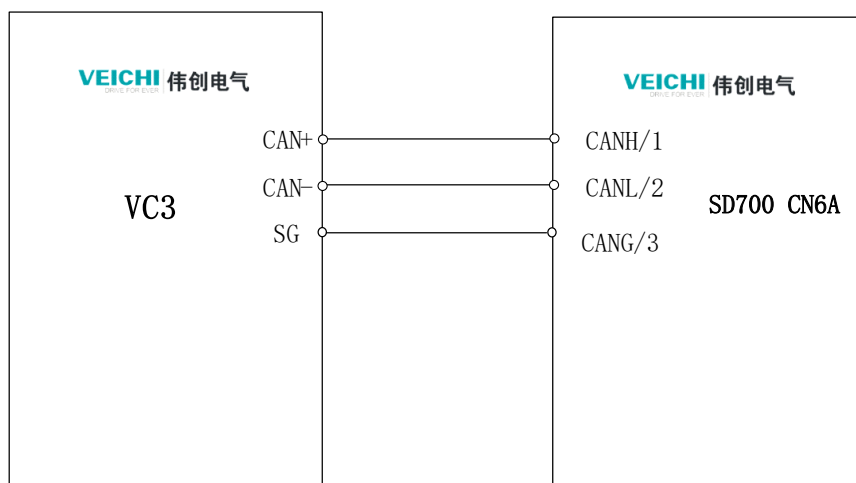
- Note:** 1、VC3 and the terminal resistor of the CAN card are set to ON
 2、After setting SD700 parameters, please power off and restart, When VC3 power off, please remove the download cable, otherwise the power off is not thorough enough
 3、SD700 termination resistor model number:SD700-RJ45-120ohm



CANopen Indicator lights

LED lights	CAN(Green)	ERR(Red)
OFF	NO configuration	NO fault
ON	working	System error message
Blinking	abnormal	CAN communication abnormality and system error

一、Wiring Diagram



二、SD700 parameters

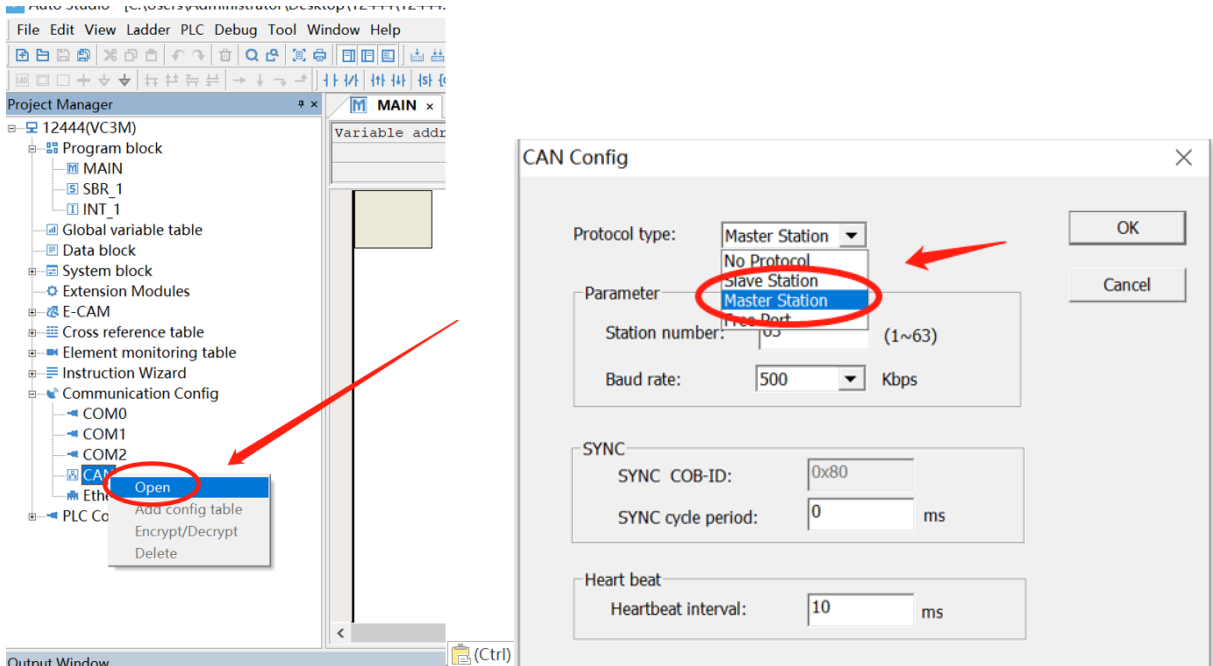
PN080=1 (Local address)

PN083=5(In this case we choose 500k baud rate)

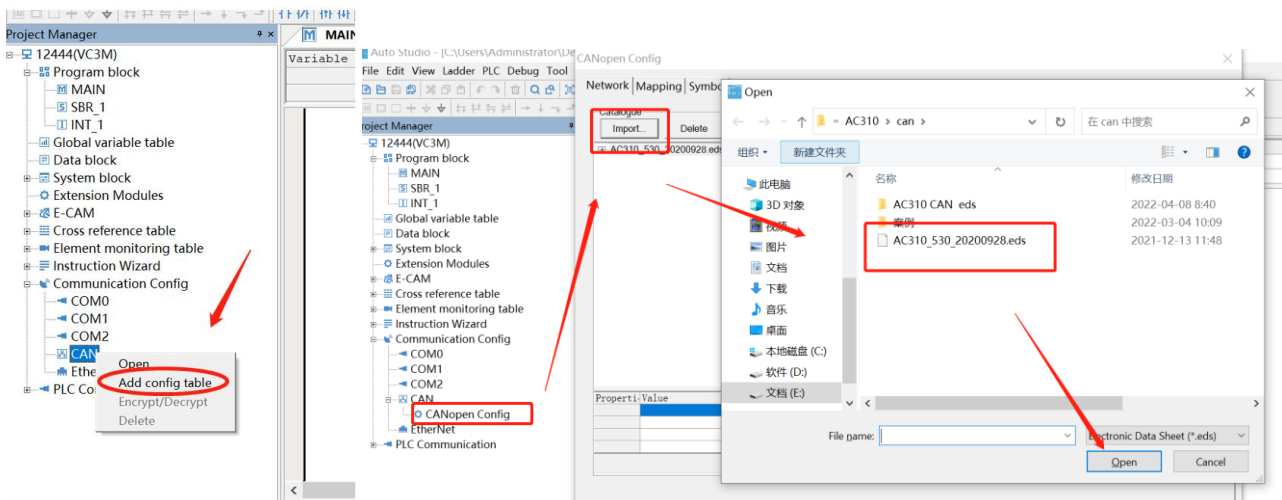
PN208=4(channel selection canopen)

三、VC3 Settings

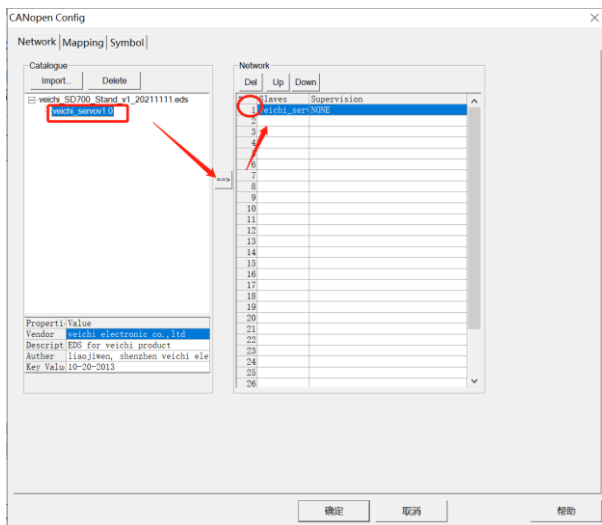
Step 1: Choose to use VC3 for the main site



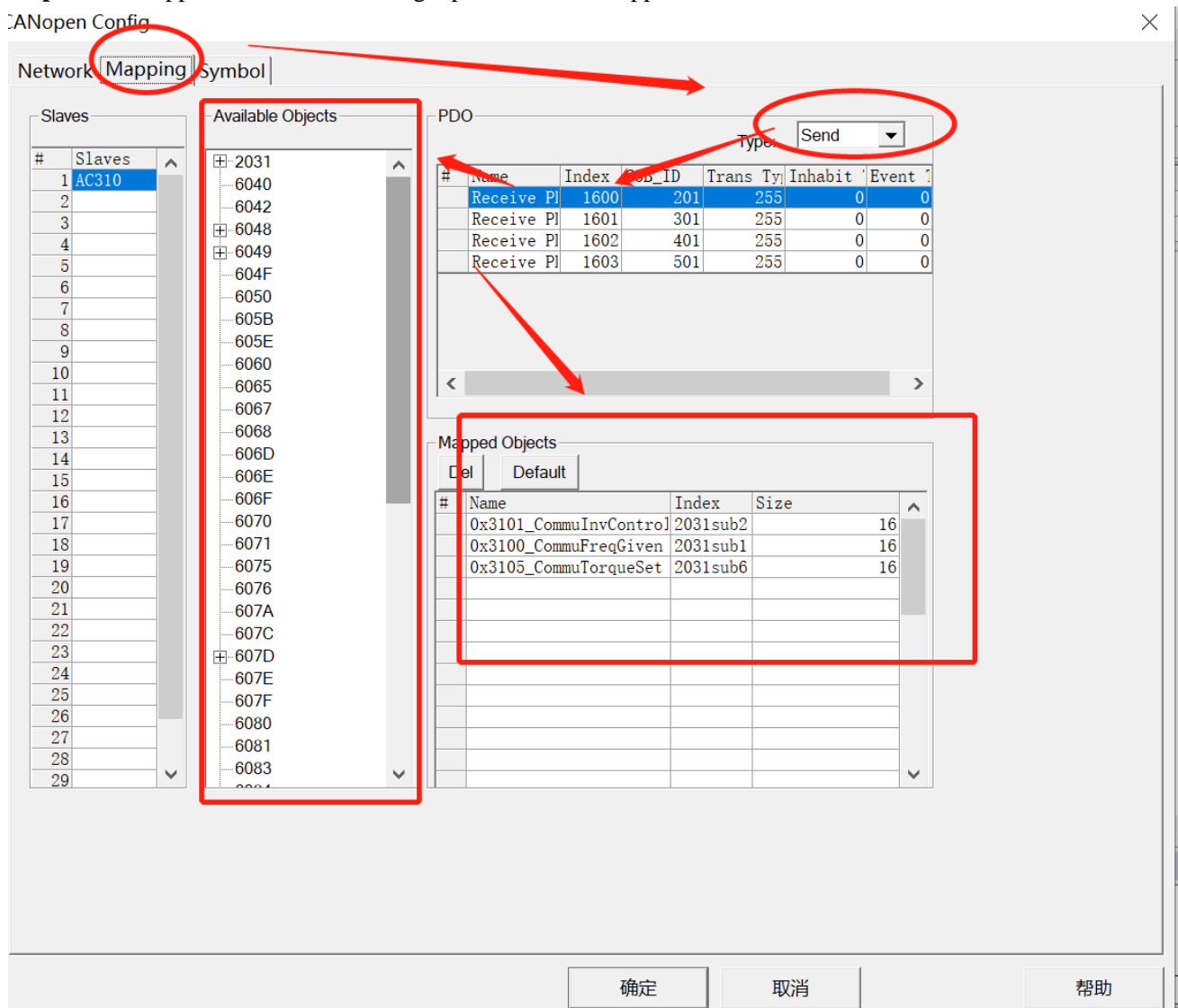
Step 2: Import EDS file, Take AC310 as an example. If you do not SD700 of EDS file. Pls ask the manufacture for.



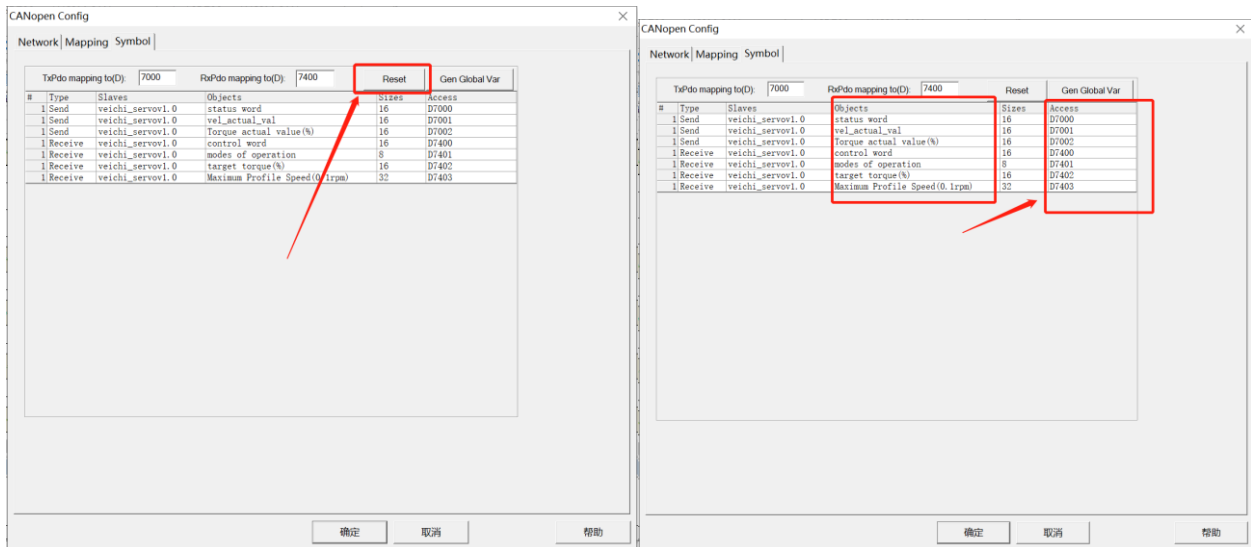
Step 3: Determine the slave station number



Step 4: The mapped address is not enough, please add the mapped address as below



Step 5: Assign the mapped address to the inside of the plc



Step 6: Start programming

